

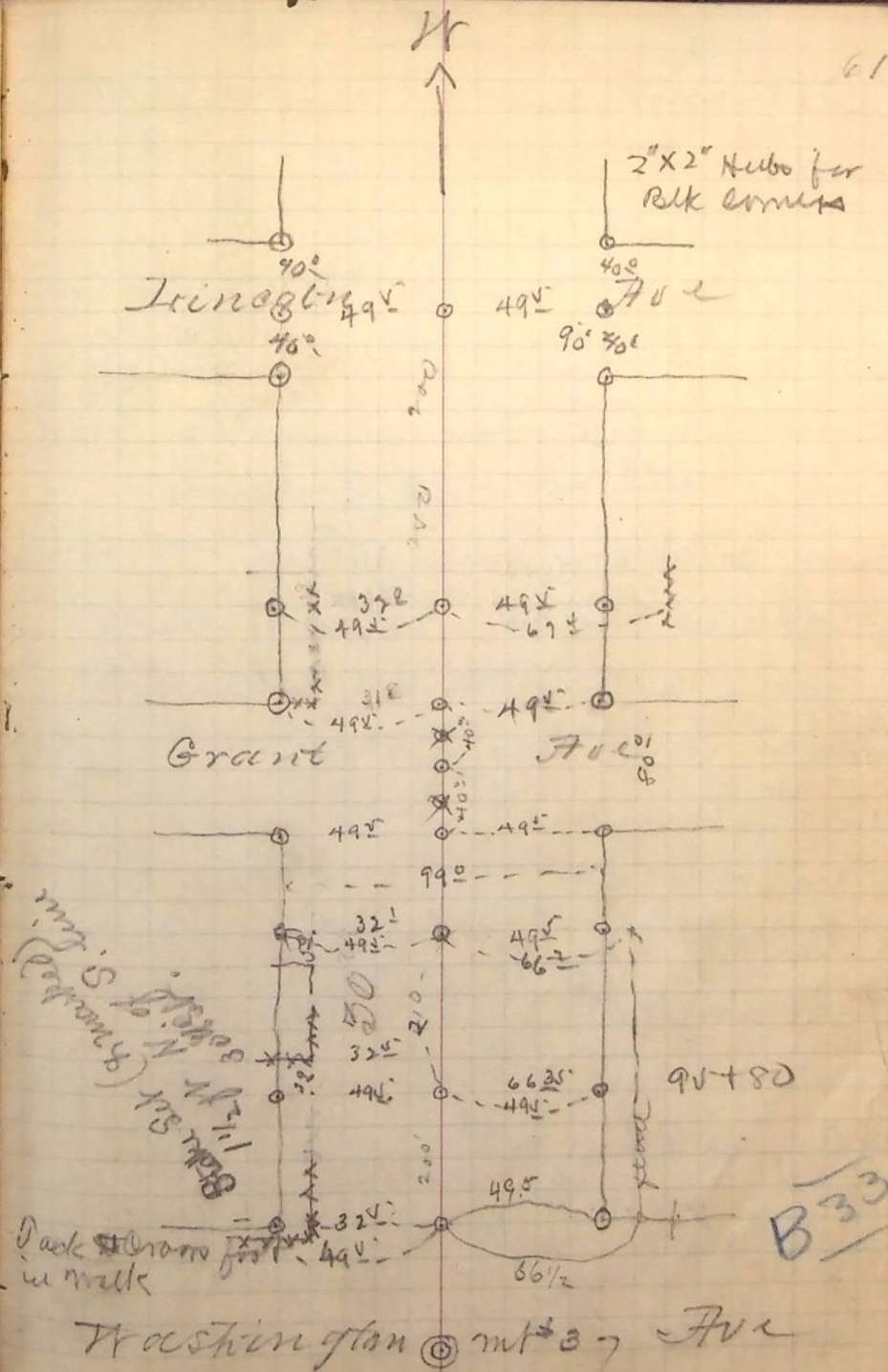
See page 63

86 + 55 30
89 + 05 20
95 + 80
also set Hub Sta 97 + 90
for the West line Wash am
set Hub 56 ft West of mt #37
Put in by intersection
P. on Hub Center Suisun + 30 ft at
Just over mt #37 Washington + 30 ft at

Arroyos

30 ft at Washington to Wall
stepping out on + 5' lines of
Monday Am. May 5th 1890

B33



B33